



## BACKGROUND: LEASIDE STATION

**Leaside Station** will be an underground station located at the Bayview Avenue and Eglinton Avenue East intersection. The station's name comes from the neighbourhood in which it is situated, and to differentiate it from the existing Bayview Station on the TTC's Line 4.

### TIMELINE

- Construction of Leaside Station began in summer 2016 and is scheduled for completion in 2021.

### KEY FEATURES

- Two station entrances: one at the northwest corner of the intersection and one at the southeast corner
- Expanded plaza at the southeast entrance, providing a visual and pedestrian connection to the adjacent Howard Talbot Park
- On-street TTC bus connections
- 60 outdoor bicycle parking spaces
- Retail spaces inside the southeast entrance

### STATION CONSTRUCTION

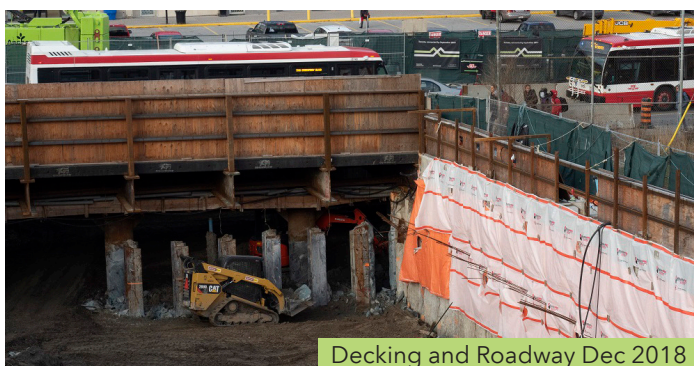
- Prior to construction, utilities under the roadway were relocated to make room for excavation.
- Leaside Station is being built using the cut-and-cover method. Excavation was started, and then covered by temporary wooden decking. Work now continues underneath the decking while traffic flows above.
- Leaside station is being designed and constructed with additional structural elements to accommodate a future residential or office building overtop the station. These will include additional structural supports above the southeast entrance and a layout that allows the entrance to remain operational during building construction.



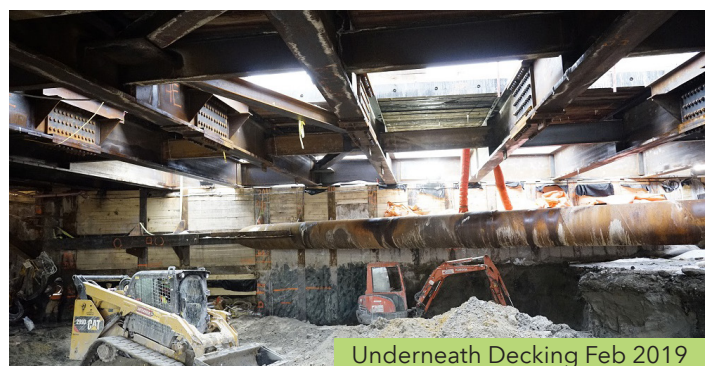
Intersection Aerial



Potential building overtop SE Entrance



Decking and Roadway Dec 2018



Underneath Decking Feb 2019

## EGLINTON CROSSTOWN